

# D Y N A M I C   B I B L E

T H E   C O M P A N I O N

P e t e r   H a n

# D Y N A M I C   B I B L E

## T H E   C O M P A N I O N

Copyright © 2016 Richard Peter Han

Printed by Asia Korea Printing Inc. Seoul, South Korea.

Cover 300 gsm C1S paper soft touch coating

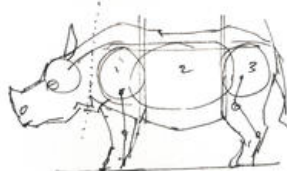
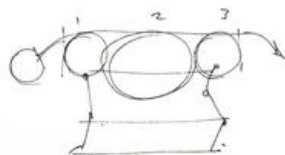
Paper stock 200 gsm “Tintoretto” Italian

Typeface Adobe Garamond Pro

Illustrations and writings by Richard Peter Han

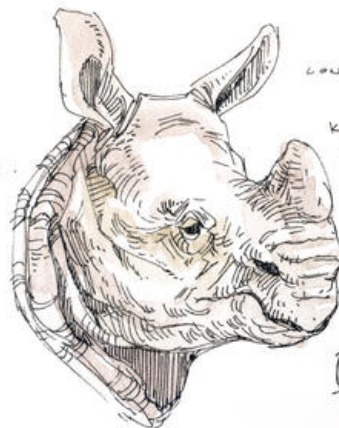
All rights reserved. No part of this book may be reproduced in any form without permission in writing from the artist, except by a reviewer who may quote brief passages and reproduce. Not more than five illustrations in a review to be printed in a magazine or newspaper. Designed and published in the United States of America.

Published July 2016



THE CONSTRUCTION  
SIDE STUDY

POUT



CONSTANTLY A LOT OF TEARS

KERATIN IS WHAT THE HORNS  
ARE MADE OF. SAME AS  
HAIR AND FINGER NAILS



PREHENSILE LIPS

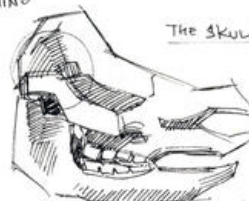
OBSERVATION AT SD ZOO



PLATE ARMOR LIKE SKIN.  
LARGE MUSCLES IN THE NECK TO HOLD THE HEAD WEIGHT.

INDIAN RHINO

GEOMETRIC  
FORMS  
FOR  
SKELETAL  
STRUCTURE



THE SKULL

# SECRETARY BIRD.

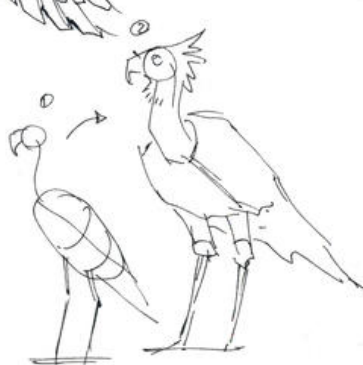
LARGE BIRD OF PREY MOSTLY  
LAND LOVED. FOUND IN AFRICA IN  
THE GRASSLANDS HUNTING SMALL MAMMALS  
AND REPTILES, EVEN VENOMOUS  
SNAKES.



WING FEATHERS SHOULD BE  
TREATED AS OVERLAPPING  
GEOMETRIC FORMS.

GROUP THE FEATHERS  
TOGETHER.

GETTING  
COMFORTABLE



THE SHAPES.



THE  
TALONS



TALONS FOR  
STUMPING  
SNAKES



SKULL FORM.



SECRETARY  
BIRD



# THE AMAZING CEPHALOPOD

THE VARIOUS FORMS OF MOLLUSCS.

SIMPLICITY IS  
KEY

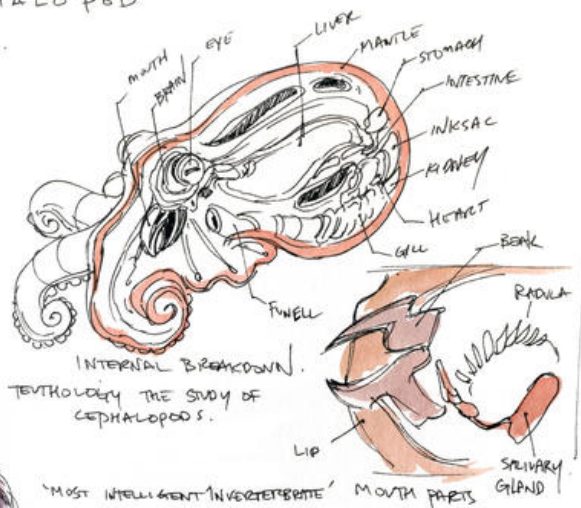
ABOUT 800 SPECIES  
OF CEPHALOPODS  
IDENTIFIED.

DRAW THROUGH  
CYLINDER FOR  
EYE PARTS.

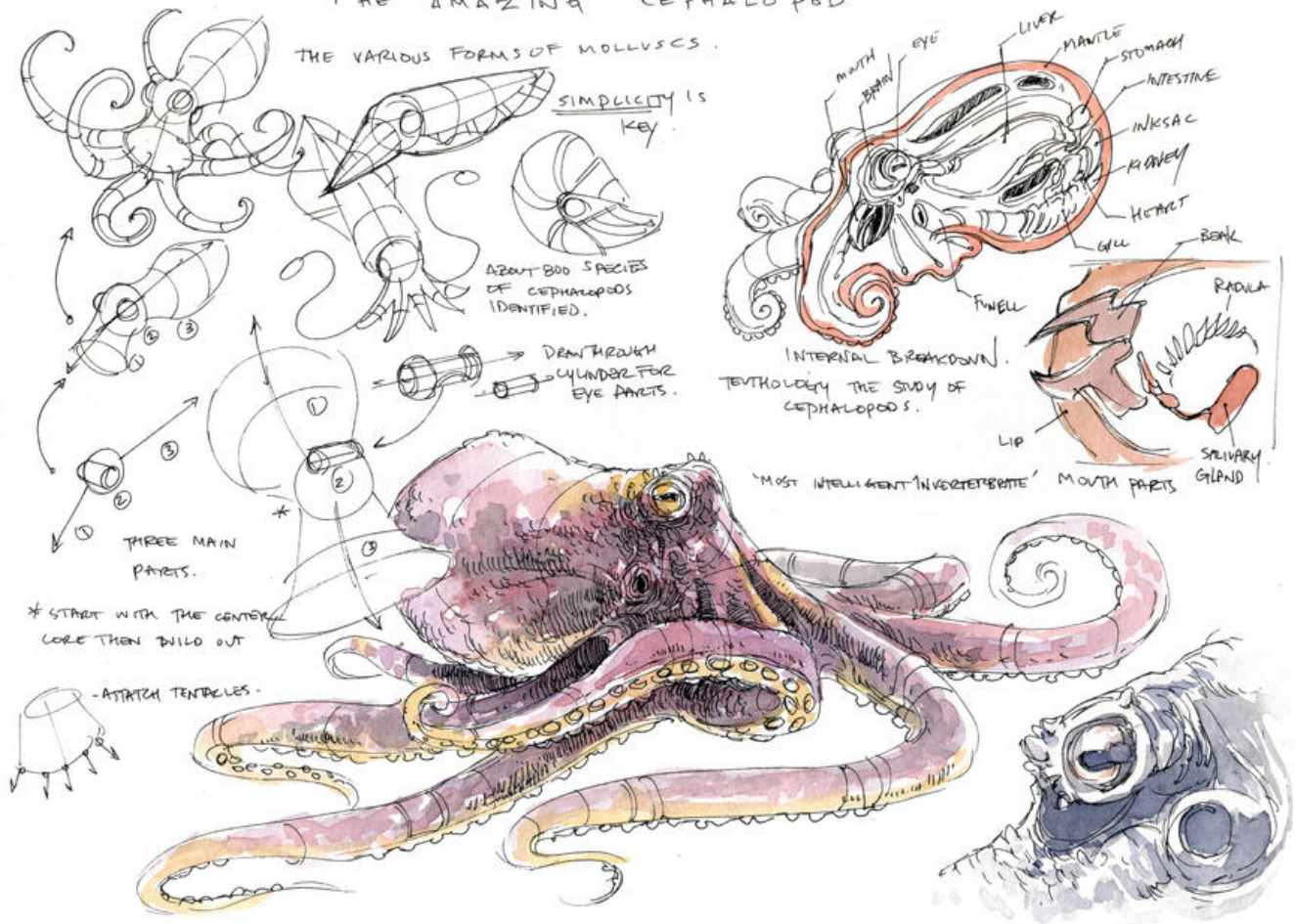
THREE MAIN  
PARTS.

\* START WITH THE CENTRAL  
CORE THEN BUILD OUT

- ATTACH TENTACLES -



'MOST INTELLIGENT INVERTEBRATE'



# CUTENESS

WHAT MAKES SOMETHING CUTE?

OUR NATURAL INSTINCT OF RESPONDING TO OUR OWN YOUNG IS MIRRORED AND PROJECTED ONTO OTHER THINGS.

WHAT ARE THE PHYSICAL ATTRIBUTES?

- LARGE EYES
- LARGE HEAD
- SMALL NOSE AND MOUTH



NEUTRAL

THE LOCATION OF THESE FEATURES ON A FORM CREATES VARIATIONS AND OTHER EXPRESSIONS.



HIGHER NOSE



LOW NOSE



WIDE EYES

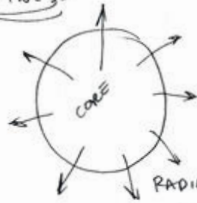


FORM CHANGE

OTHER ATTRIBUTES ...  
FLUFFINESS



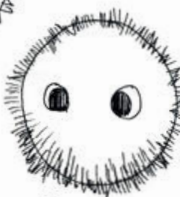
BABY...



RADIATING AWAY FROM THE CORE



TOO SPIKY!!



\*TOO SPINY...



A RHYTHM OF LARGE FORMS THAN BREAKING IT WITH HATCHING.



RED PANDA

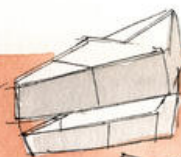
DO CONSIDER ...



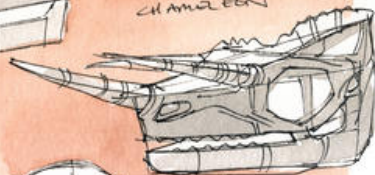
SHADOW

# SKULLS

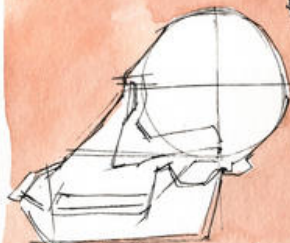
GEOMETRIC FORM LANGUAGE.  
APPLIED TO ORGANIC SHAPES.



① JACKSON'S CHAMAZEEN

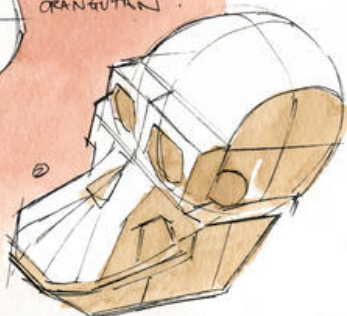


②

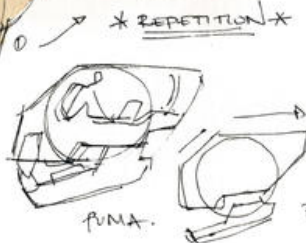
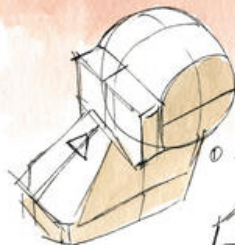


SIDE STUDY

ORANGUTAN



②

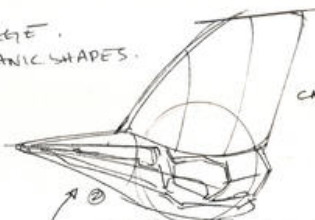


PUMA.

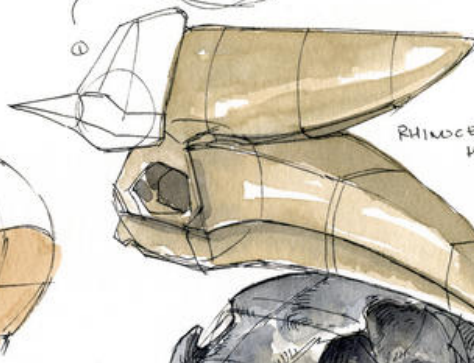
\* REPETITION \*



BREAK DOWN!



CARIBOU.



RHINOCEROS HORNBILL.



PARROT



HORNED OWL



ELF OWL



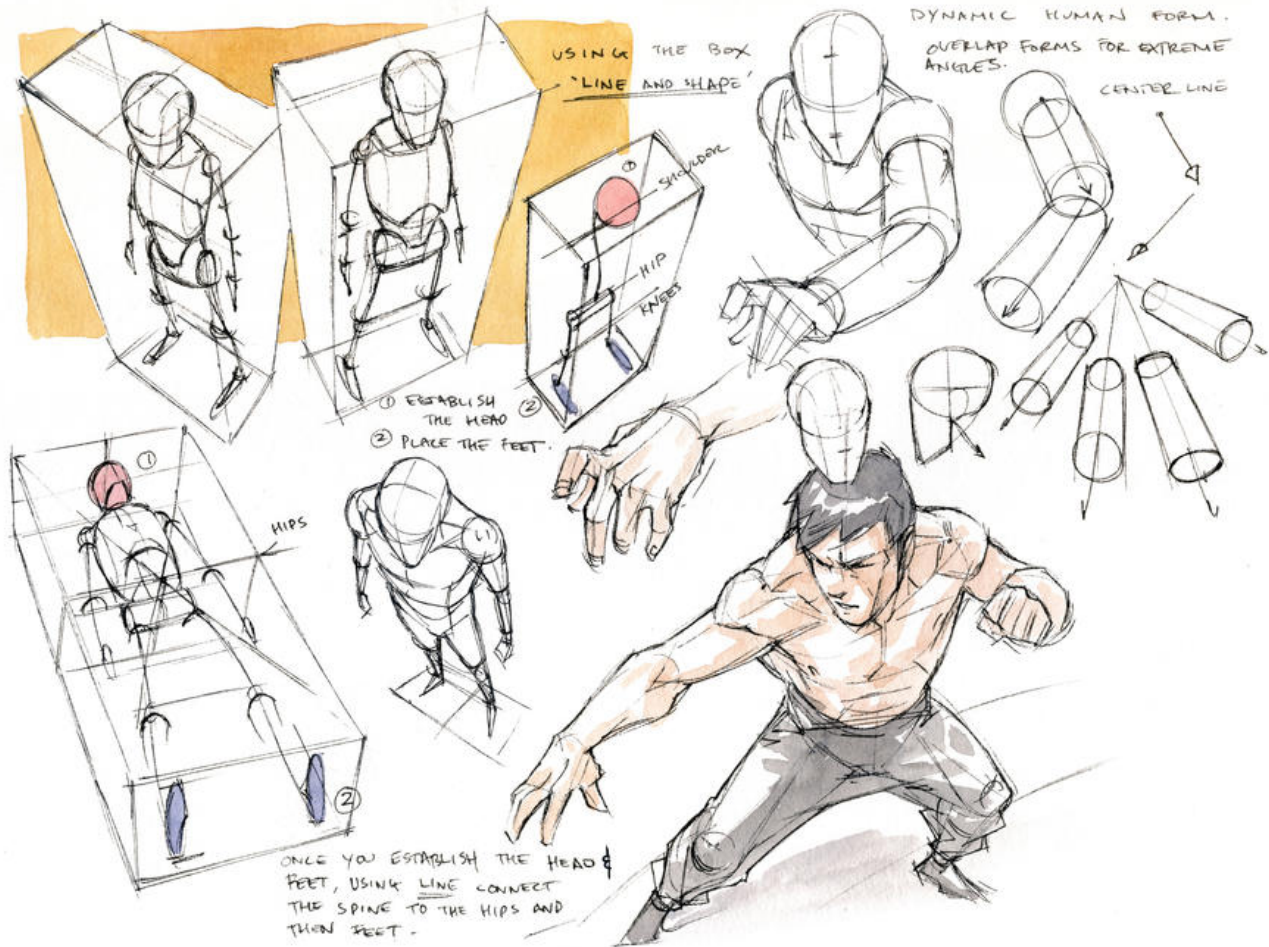
AFRICAN LION

\* THE IMPORTANCE OF  
BEING ABLE TO TRANSLATE  
ORGANIC SHAPES INTO  
GEOMETRIC FORMS  
IS PARAMOUNT IN  
DEVELOPING RAPID  
VIS SKILLS.

A BOX, TRIANGLE, CIRCLE  
IS MUCH EASIER TO  
DRAW THEN A DIRECT  
COPY OF THE SUBJECT  
IN FRONT OF YOU.

ALL DONE FROM OBSERVATION  
CAN DIEZO NATURAL HISTORY  
MUSEUM.



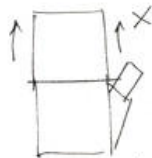




# HANDS FROM ANIMALS TO HUMAN.

KEEPING IT SIMPLE

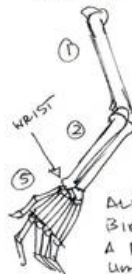
TAPER THE BOXES.



ONCE YOU HAVE THE BOX, FIND THE JOINTS.



SIMPLE BOX SHAPES

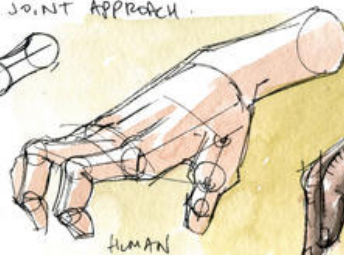


CONNECTING THE KNUCKLES.

BALL JOINT APPROACH.



STYLIZED!

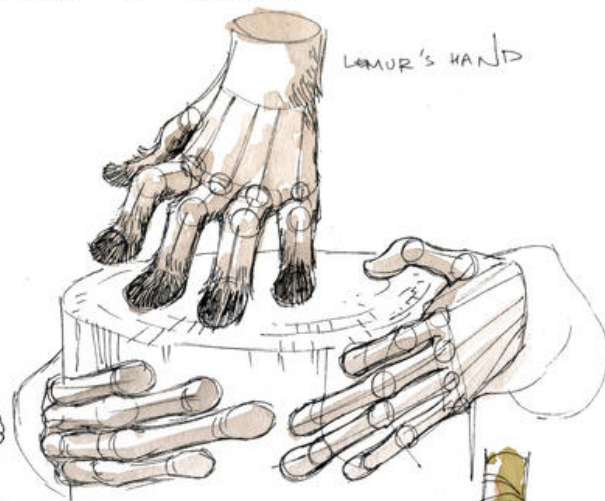


HUMAN



ORANGUTAN

LEMON'S HAND



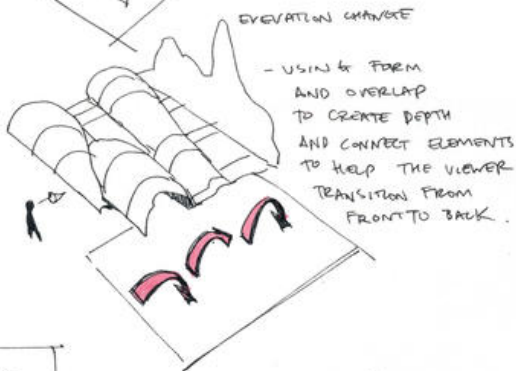
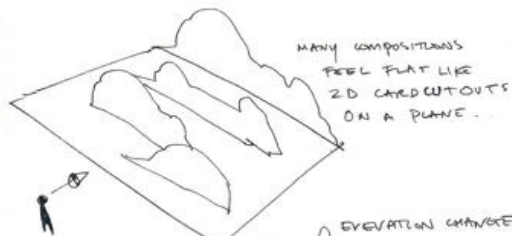
ALL LAND MAMMALS, REPTILES, BIRDS, AMPHIBIANS SHARE A RELATIONSHIP OF LIMB STRUCTURE.



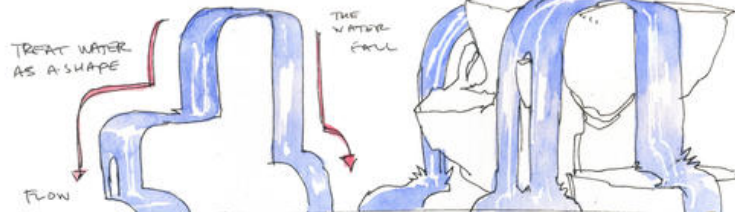
CHIMPANZEE

# THE NATURAL LANDSCAPE

GEINING MOUNTED ROCKS



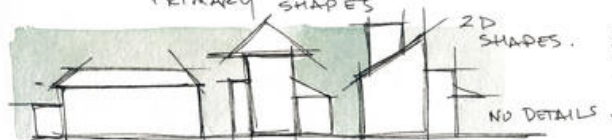
USE SCALE TO GET A SENSE OF EPICNESS, IN A POSITIVE OR FEARFUL WAY.





PRIMARY SHAPES

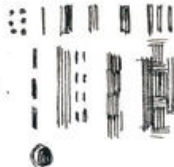
# — ARCHITECTURE —



2D SHAPES.

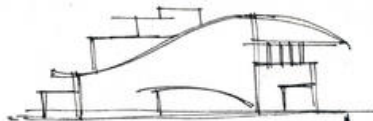
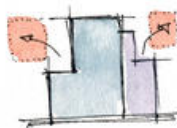
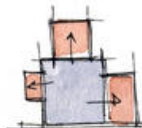
NO DETAILS.

MARK MAKING.

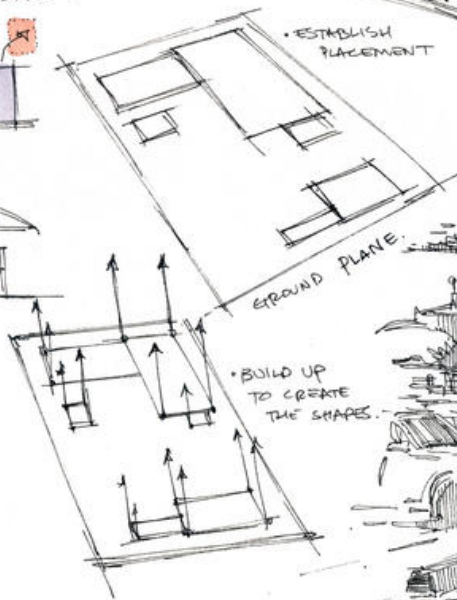
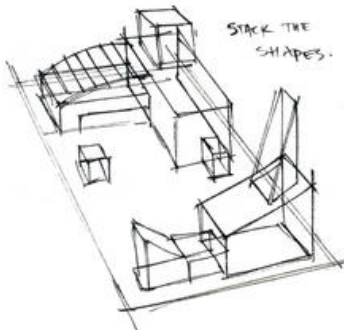


COMBINING FLAT SHAPES,  
PUSHING PROPORTIONS.

ADDITIVE / SUBTRACTIVE.



STACK THE SHAPES.



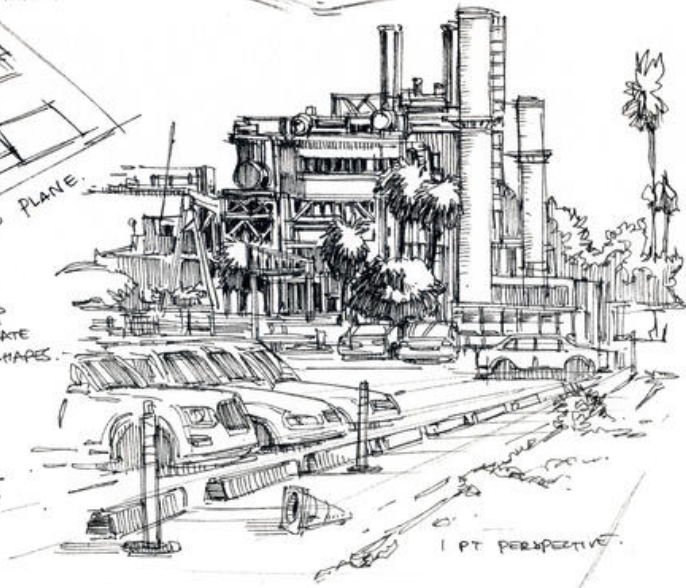
ESTABLISH  
PLACEMENT

GROUND PLANE.

BUILD UP  
TO CREATE  
THE SHAPES.



2 PT PERSPECTIVE.

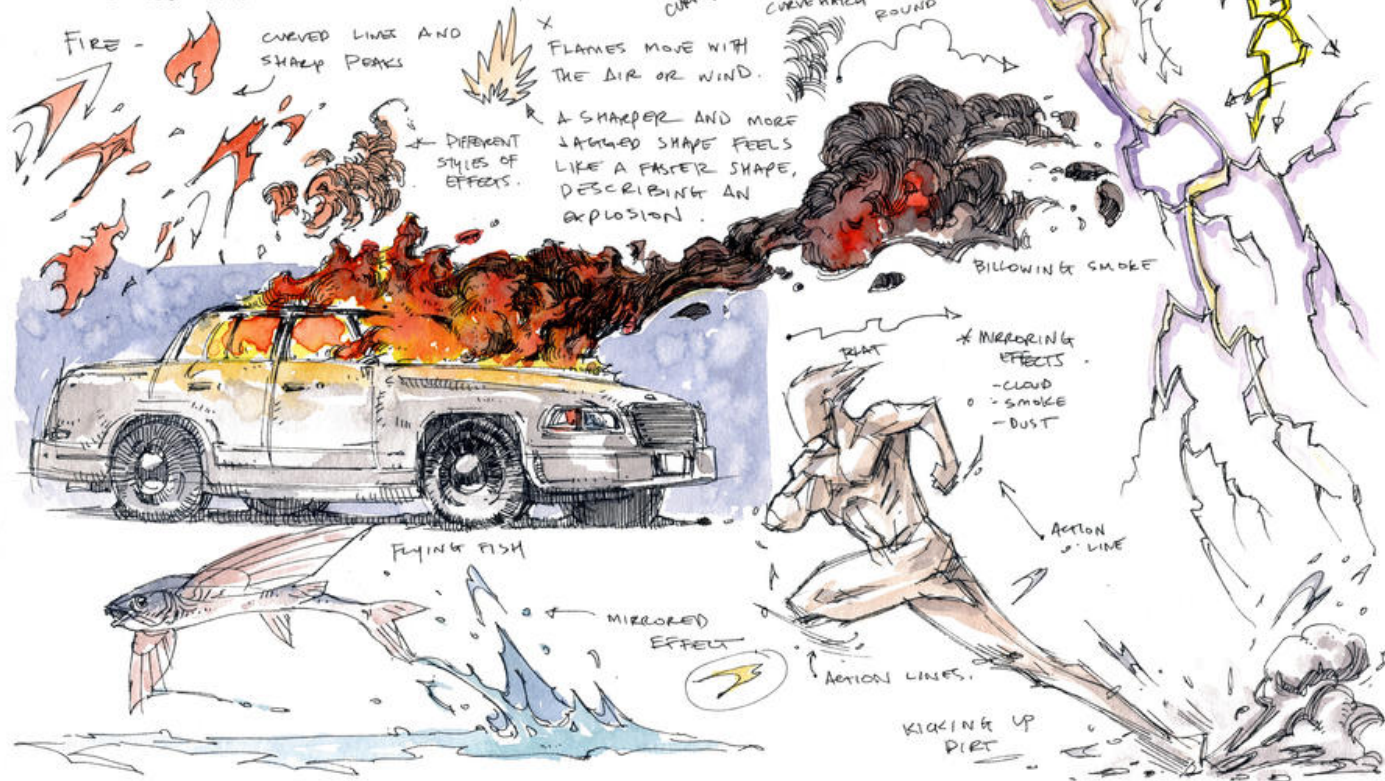


1 PT PERSPECTIVE.



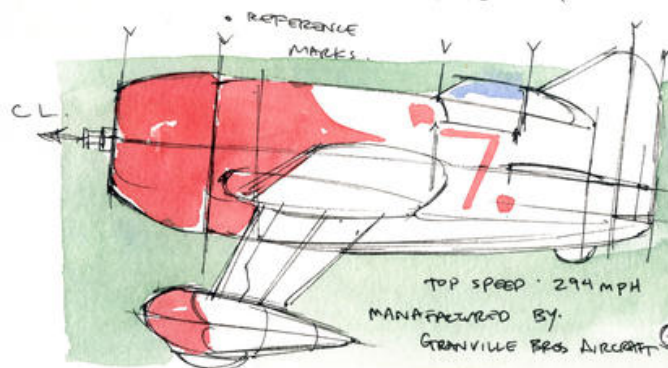
# ~ EFFECTS ~

ALL EFFECTS CAN BE COMMUNICATED THROUGH SHAPES. FIND THE GRAPHIC REPRESENTATIONS TO EASILY VISUALLY DESCRIBE IT.



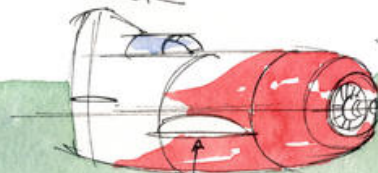


# THE GEE BEE RACER

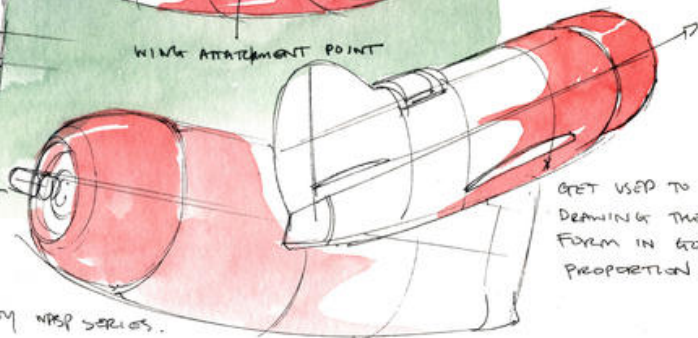


FIRST FLIGHT IN 1932

TOP SPEED - 294 MPH  
MANUFACTURED BY:  
GRANVILLE BROS AIRCRAFT

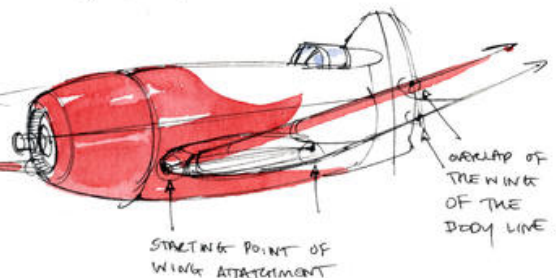
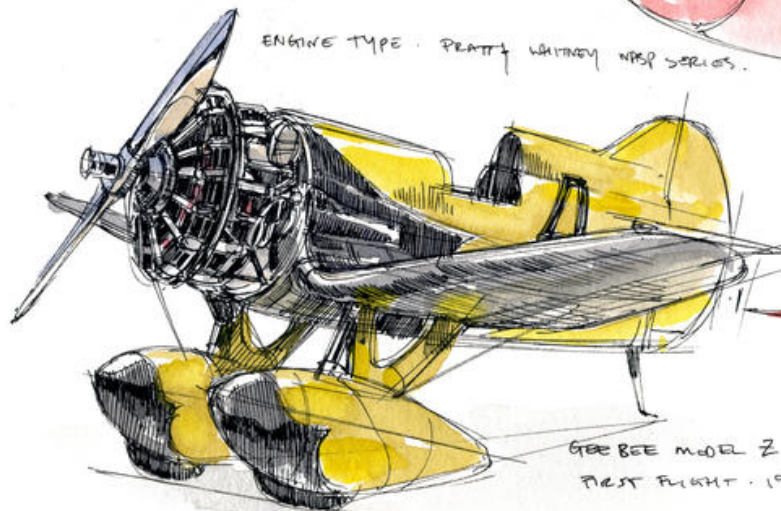


WING ATTACHMENT POINT

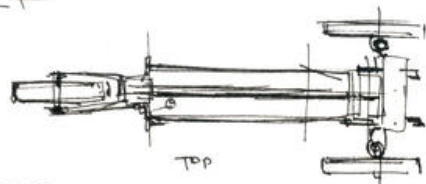
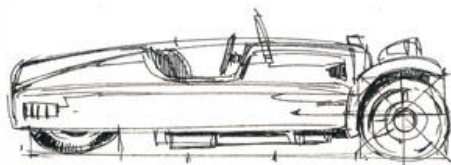


ENGINE TYPE - PRATT & WHITNEY WSP SERIES.

↓ APPLYING THE WINGS.

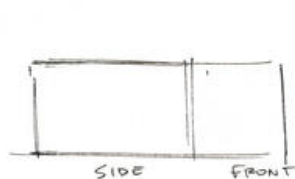


# MORGAN SUPER SPORT



TOP

LET'S MAKE THAT PERSPECTIVE

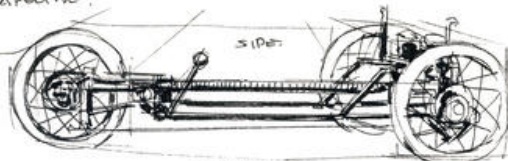


SIDE

FRONT



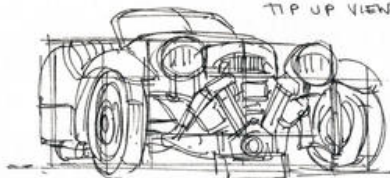
HL



SIDE

CHASSIS

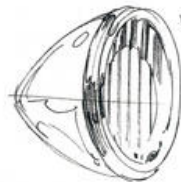
TIP UP VIEW.



CAR ASSEMBLED IN ENGLAND

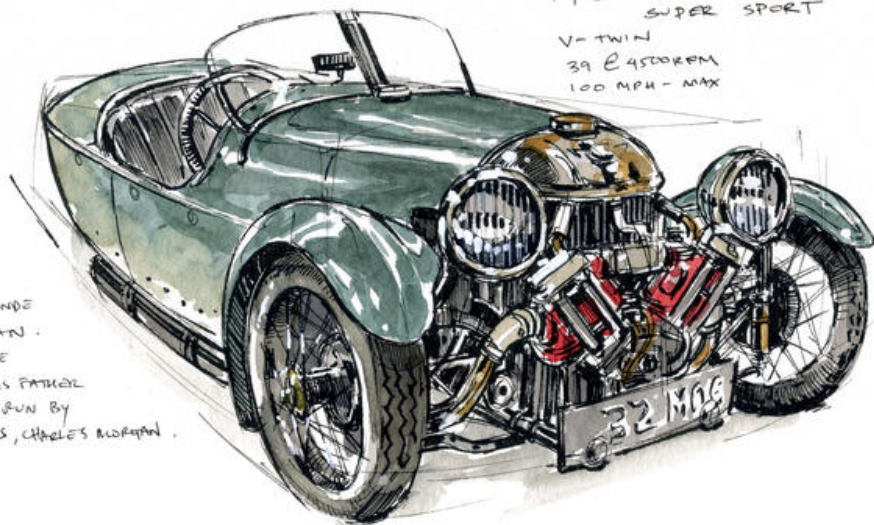
1932 - MORGAN  
SUPER SPORT

V-TWIN  
39 @ 4500 RPM  
100 MPH - MAX



HEADLAMP.

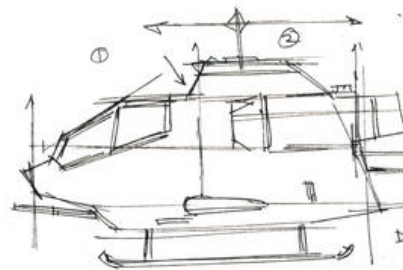
THE BRITISH CAR  
MANUFACTURE WAS FOUNDED  
IN 1909 H.F.S MORGAN.  
ROYAL MORGAN RAN THE  
COMPANY SUCCEEDING HIS FATHER  
TILL 2003. CURRENTLY RUN BY  
THE GRANDSON OF H.F.S, CHARLES MORGAN.



AH-1G

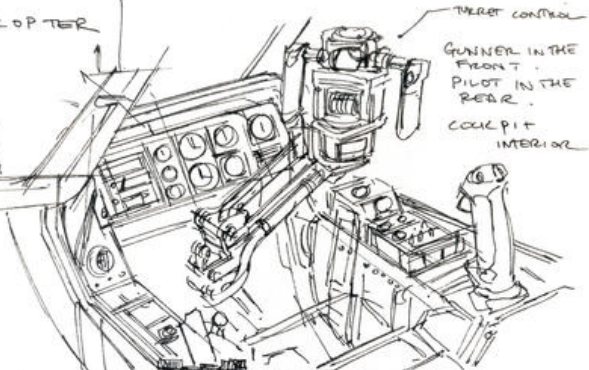
C O B R A H E L I C O P T E R

'ATTACK HELI'  
WITH A CREW OF TWO.



SIDE STUDY

DEVELOPED BY BOEING  
HELICOPTER IN 1965



GUINER IN THE  
FRONT  
PILOT IN THE  
REAR

COCKPIT  
INTERIOR

GET THE PROPORTION OF LENGTH

BROKEN INTO THREE  
ELEMENTS

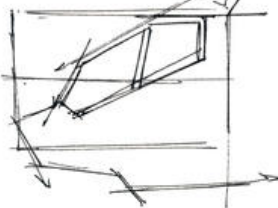
COCKPIT

MAIN BODY

TAIL



BLOCK OUT THE SHAPE

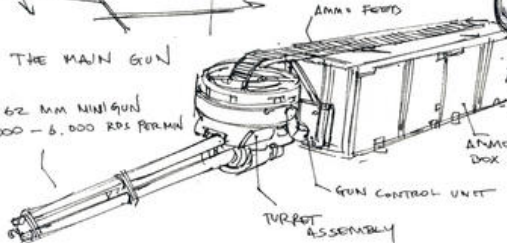


CUT AWAY



THE MAIN GUN

7.62 MM M16 GUN  
4,000 - 6,000 RPS PER MIN



AMMO FEED

AMMO BOX

GUN CONTROL UNIT

TURRET  
ASSEMBLY



POWERED BY A  
LYCOMING T53-L-13  
TURBINE ENGINE

FIRST USED IN  
1967 DURING THE  
VIETNAM WAR

MAXIMUM SPEED 170 KNOTS

[www.peterhanstyle.com](http://www.peterhanstyle.com)

[peterhanstyle](#) / [instagram](#)

Thank you for the support



